



teaching and learning with TECHNOLOGY

Fall 2011

Faculty Satisfaction Survey

General Purpose Classrooms

We sent **1916** invitations to participate and received **629** responses:

Sponsors

**ITS, Teaching and Learning
with Technology**

&

**University Committee on
Instructional Facilities (UCIF)**

GPC Facts

- **351 General-Purpose Classrooms** (5 offline)
- **<3% Assignable Square Footage at UP**
- **20,888 Seats**
- **30,617,438 Core Annual Instructional Hours Available**
(8-5:30 M-F x 39 weeks – no eve., weekends, May-mester)

GPC Pool

215	ITEC	(Instructor podium with technology)
103	PTEC	(Projector/speaker system used with instructor-provided laptop)
30	STEC	(ITEC and student computers)
3	VTEC	(ITEC with videoconferencing)

What We Asked

- **Physical Space Aspects**
- **Technology Used**
- **Frequency Technology Used**
- **Reliability / Ease of Use**
- **Wish List / New Technologies**

What We Learned - Space

How easy is it to locate your classroom?

6%
less
than good

21% good

70%
better
than good

How is your classroom's physical appearance?

10%
less
than good

30% good

58%
better
than good



How conducive to learning
is the student seating?

26%
less
than good

32% good

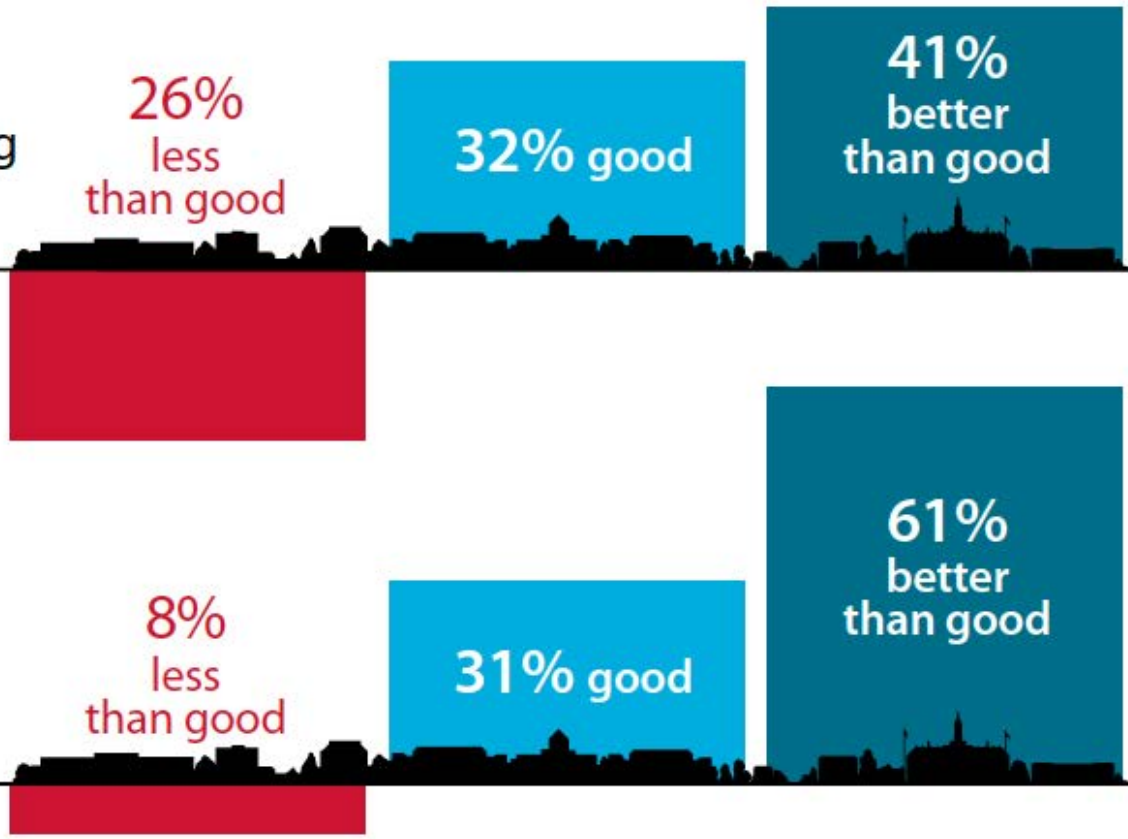
41%
better
than good

Is your classroom's
lighting sufficient?

8%
less
than good

31% good

61%
better
than good



How is the temperature
in your classroom?

24%
less
than good

36% good

39%
better
than good

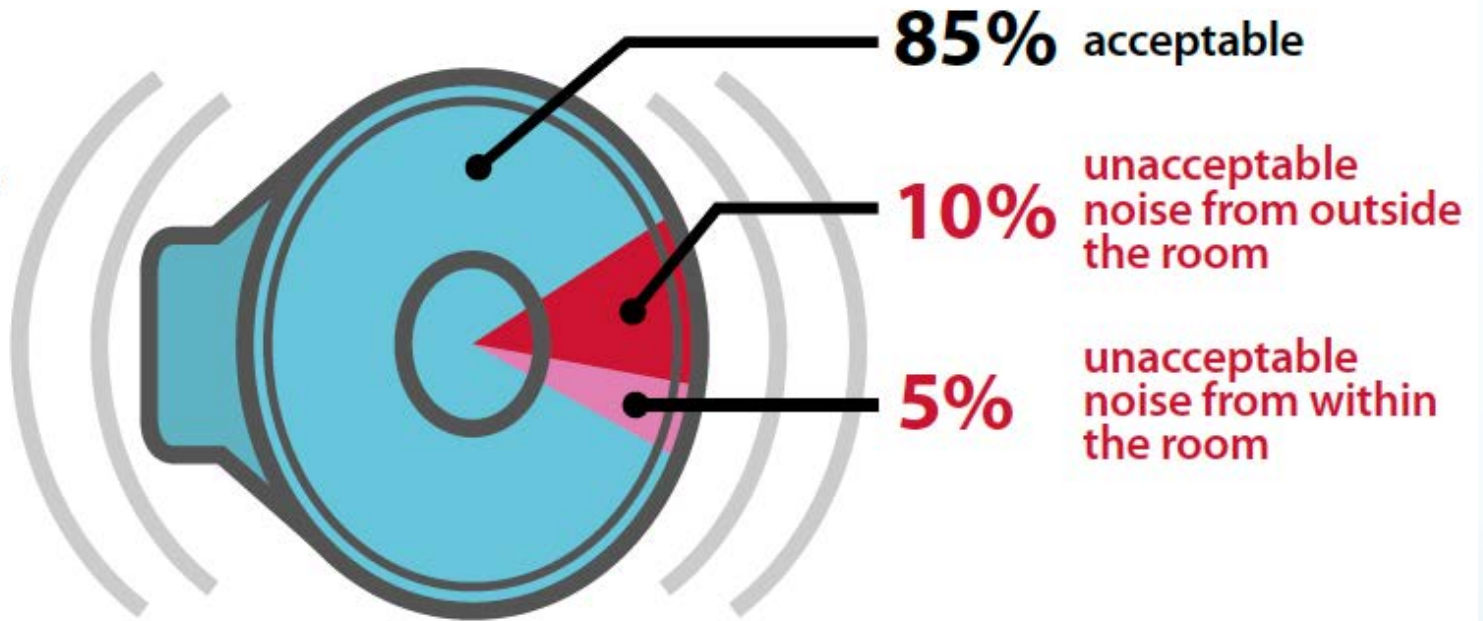
How is your classroom's
cleanliness?

7%
less
than good

30% good

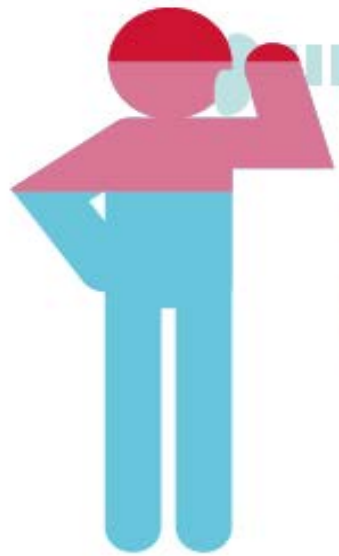
40%
better
than good

How is the classroom's noise level?



Room Complaints

32% reported minor complaints with room:

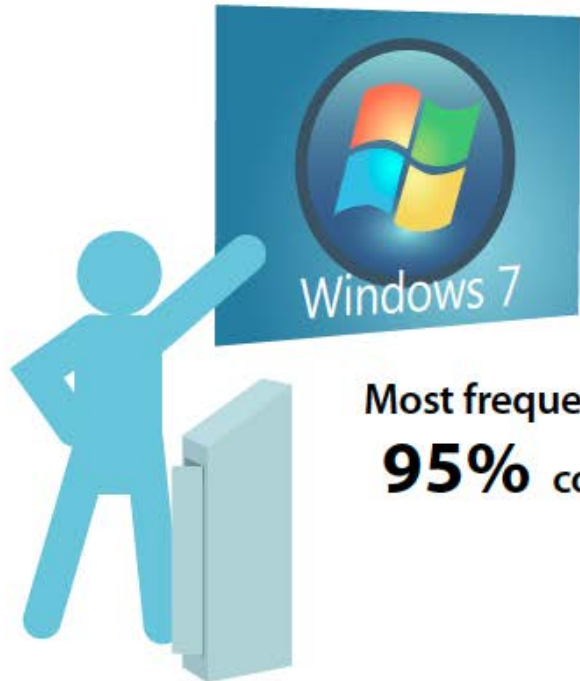


9% reported their complaints to tech classrooms hotline

23% had minor complaints they judged not worth reporting



What We Learned - Tech




Most frequently used podium computer platform:

59% Windows

11% Mac OS

Most frequently used tool:

95% computer projection



20%
instructors provide
their own laptops

An illustration of a blue stick figure carrying a laptop under their arm.

Most frequently used podium connection:

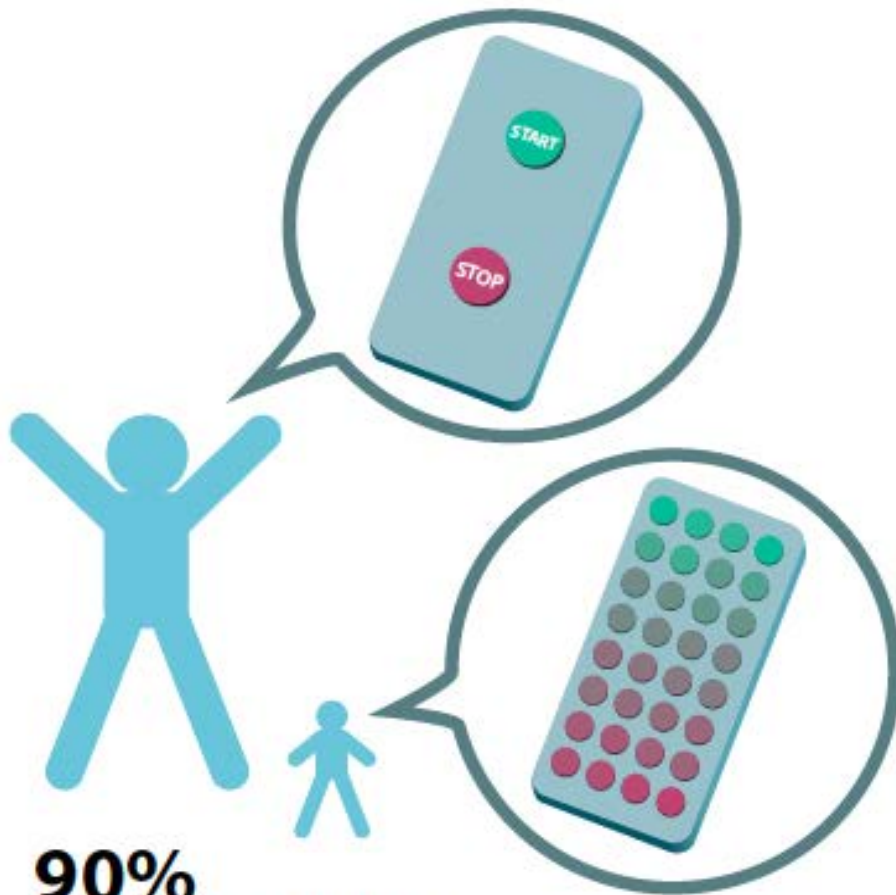
68% USB



What We Learned (cont.)

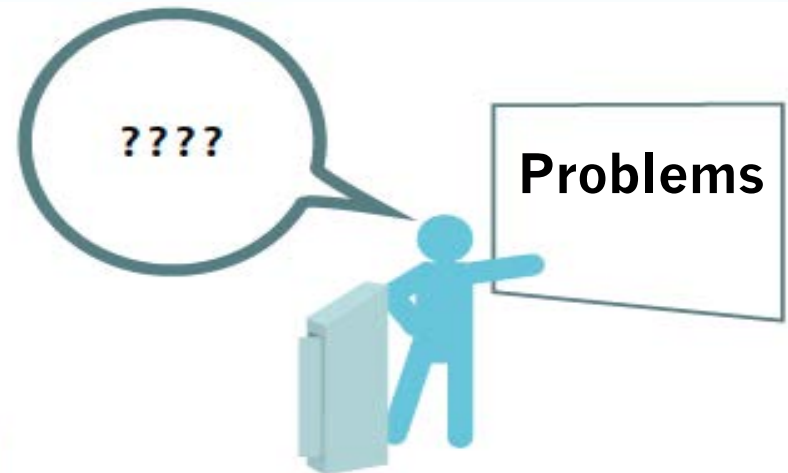
- **77% Do Not Use Overheads**
- **50% Do Not Allow Student Wireless Devices**
- **7% Use i>clicker**
- **70% Aware of In-Room Training**
(17% Participated)

Reliability / Problems



90%

felt the controls in the room were simple to use



49% never

30% once a semester

18% once a month



3%

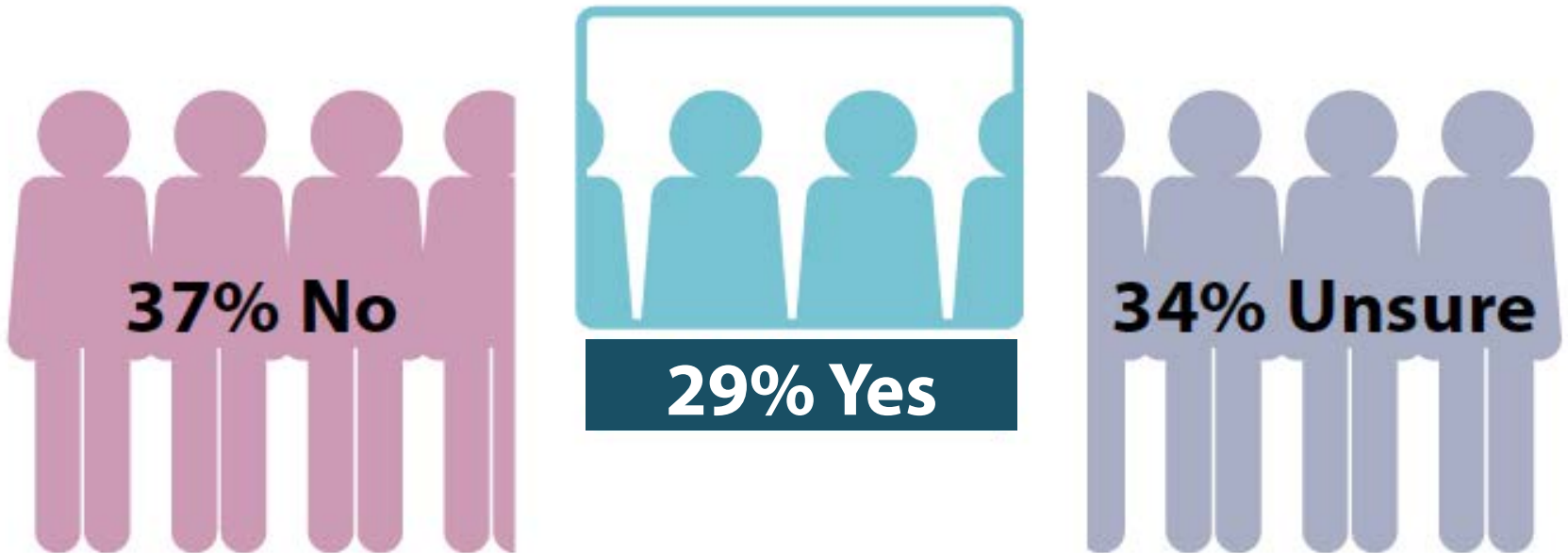
had trouble every class period

Instructor Wish List

- **Additional ITEC Rooms**
- **Document Cameras**
- **Dual Projection**
- **Reliable Wireless**
- **Lecture Capture**

Lecture Capture

We asked if participants would use lecture capture if it was available; we received 452 responses:



In The Works

- **Convert 56 PTEC to ITEC Summer 2012**
- **Document Cameras Standard**
- **Dual Projection where no Space Constraints**
- **Upgrade/Expand to 802.11n** (began Summer '11)
- **Testing Doceri Desktop** (software to allow wireless control of a computer via an iPad)
- **Lecture Capture**
 - **Fall 2011-Spring 2012 Selection Pilot**
 - **Fall 2012 Large Scale Adoption Pilot (Anticipated)**

The Changing Face of the GPC – Chambers 108 (2010)



Chambers 108 (2011)



Chambers 202 (2011)



Chambers 202 (2012)



Future Survey Plans

- **Student Survey Fall 2011 (3 Best/3 Worst & Why)**
- **Spring 2012 Instructor Survey (currently open)**
- **Share Survey Results as Appropriate**

Helpful Websites

- **Fall 2011 Results**

<http://bit.ly/tlt2011gpc>

- **Take the Spring 2012 Survey**

<http://bit.ly/surveysp2012>

- <http://clc.its.psu.edu/classrooms>

Questions & Suggestions